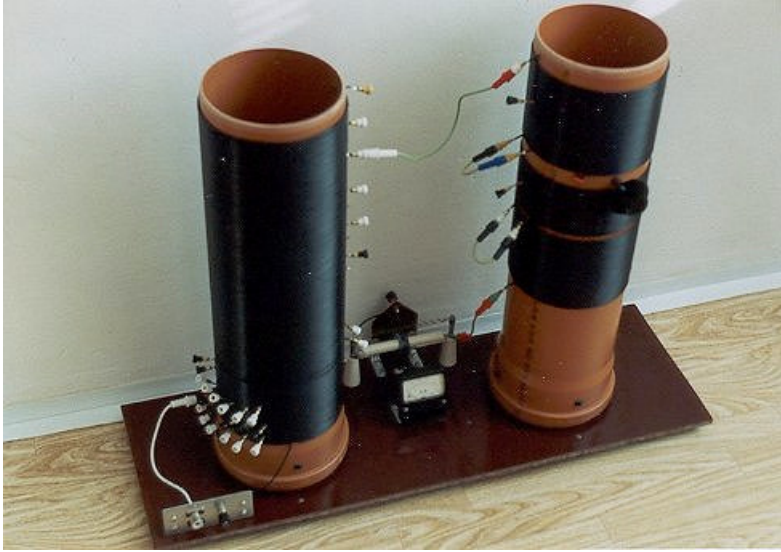


Loading Coil for 136 kHz

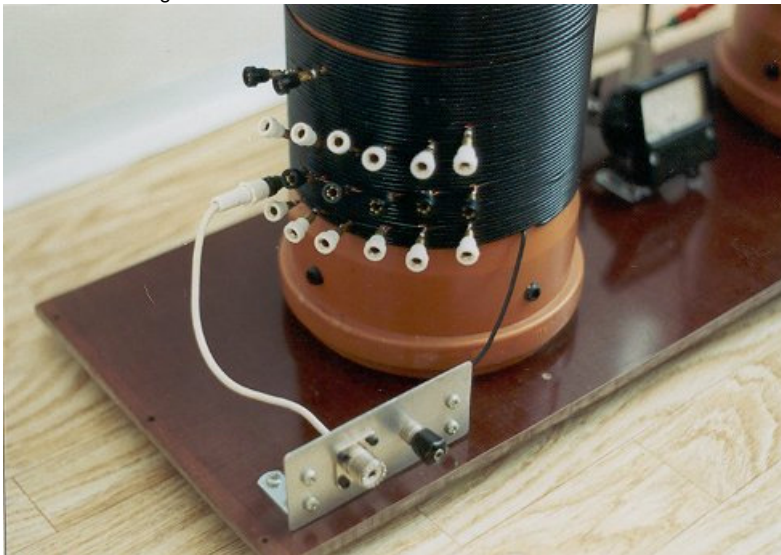
Home-made Loading Coil

Loading coil is one of the most discussed parts of the LF equipment. My loading coil is split into two parts. Left coil is tapped to provide matching and rough tuning. The right one is home-made variometer. The tubes are 150 mm in diameter.

There is an antenna current measuring on the basis between the tubes:



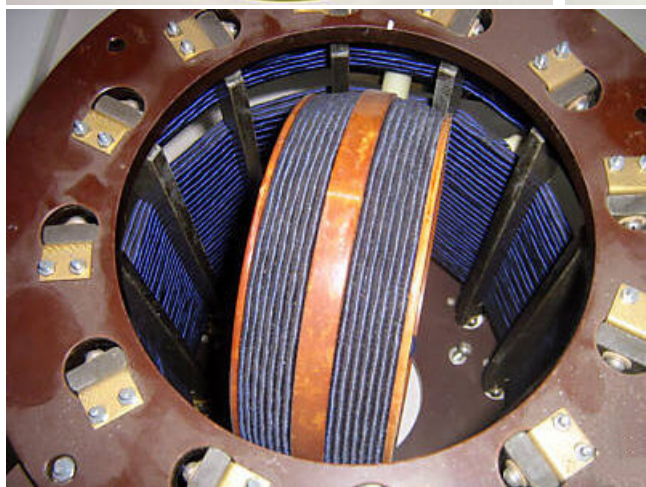
Detail of matching to 50 ohms:



How the variometer looks inside:



Professional Loading Coil (as seen on eBay)



[< Loading Coil for VLF/LF/MF](#)

[< Main Long Wave Page](#)

[< Other Projects](#)

[<< Main Page \(OK1FIG\)](#)